

Administrator Setup: Upgrade Window

The **Upgrade** window begins a series of steps to walk you through the upgrade process. You must login as an Admin level or higher to use the upgrade feature. The left column of the **Upgrade** window shows which state you're currently at in the upgrade process. Click the **Next/Prev** buttons to navigate the series of steps.

Steps to Install an Upgrade Package

1. Select the upgrade package you want to install from the **File Selection** window and click the **Next** button to advance to the **Extraction** window. (Figure 3-48)
2. The **Extraction** window shows the progress of extracting, decrypting, and verifying the files. On any failure, the upgrade process will display an error dialog and then bring you back to the **File Selection** window. On successful extraction of the package, the upgrade process will automatically advance to the **Package Details** window.
3. The **Package Details** window shows the versions of all components installed in the projector. (Figure 3-49). Select the type of install you would like to perform: **Upgrade Different Packages Only**, **Force Upgrade All**, or **Factory Defaults Install** and click the **Next** button to advance to the **Installation** window.
4. The **Installation** window displays the state of the upgrade progress. (Figure 3-50) On successful completion or failure of the installation, a dialog will display indicating the state of the upgrade. Click the **OK** button and then the **Finish** button to return to the **Main** panel.

Upgrade: File Selection Window

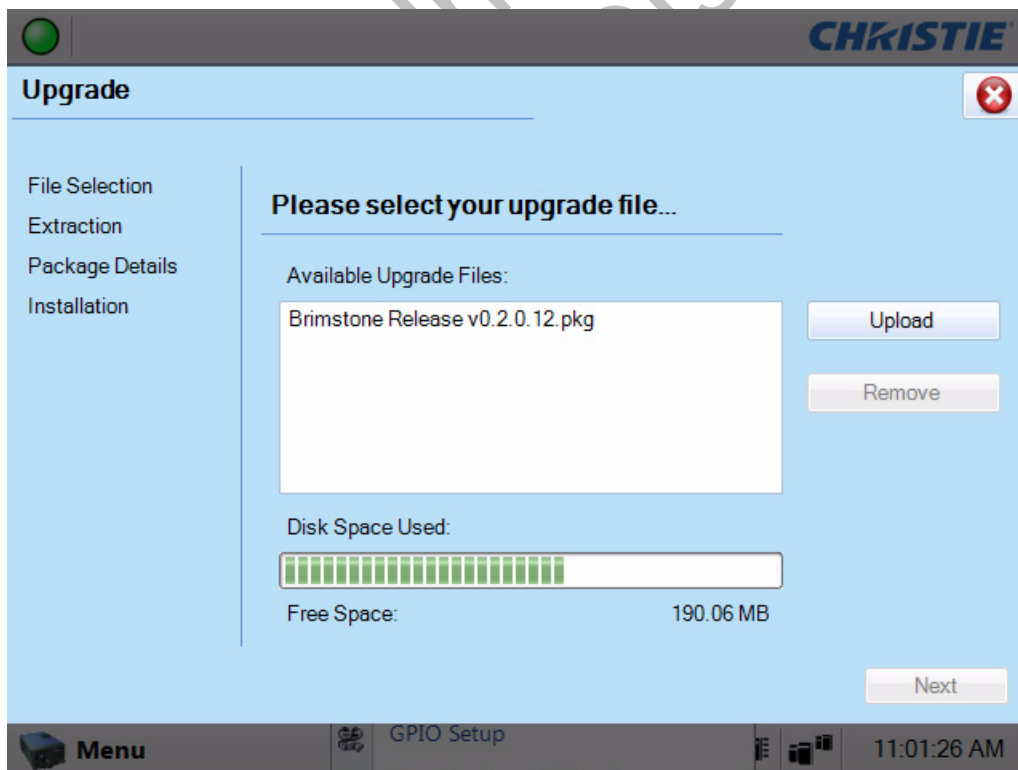


Figure 3-48 Upgrade: File Selection Window

Table 3.35 Upgrade: File Selection Window

Control	Description
Available Upgrade Files	The Available Upgrade Files region shows all the available upgrades that are currently residing in the ftp directory of the projector.
Disk Space Used	Displays a visual representation of the amount of disk space used on the projector.
Free Space	Displays the amount of available free space on the projector.
Upload	Click the Upload button to launch a file selection dialog which allows you to select a file that does not reside in the ftp directory. This would be used to load a file from a USB drive.
Remove	Highlight an upgrade file in the Available Upgrade Files region and then click the Remove button to delete the selected file from the available upgrades list. This button is disabled (greyed) if no upgrade file is selected.
Next	The Next button proceeds with the upgrade process by moving to the Extraction window. This button is disabled (greyed) if no upgrade file is selected.

Upgrade: Package Details Window

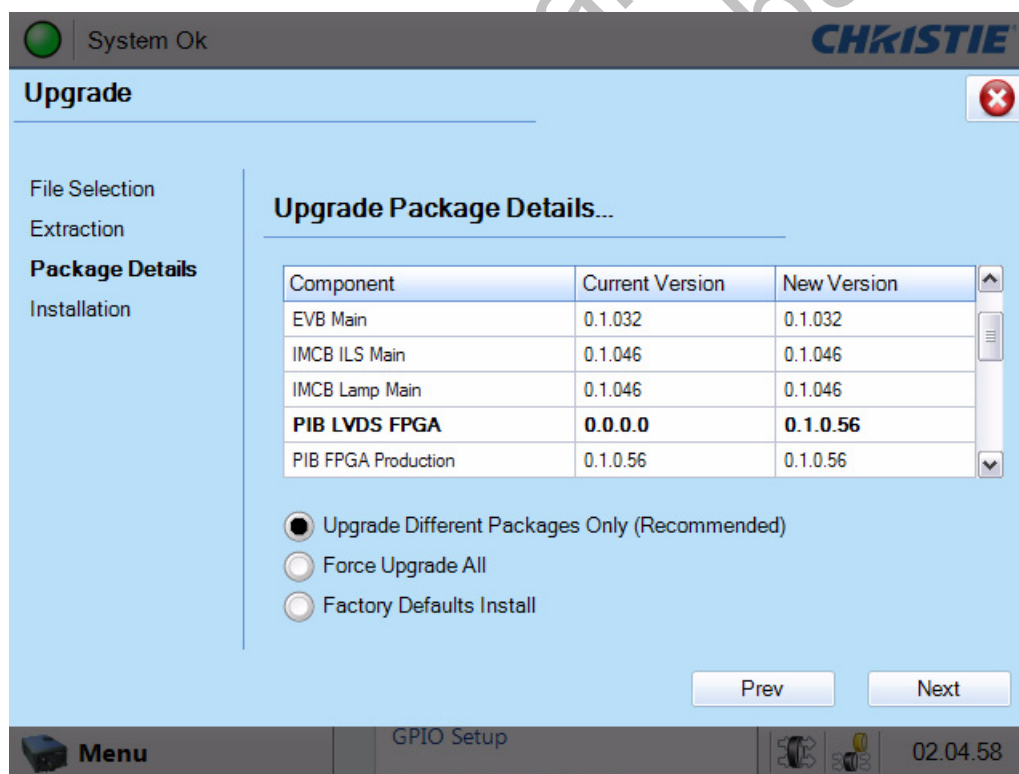


Figure 3-49 Upgrade: Package Details Window

Table 3.36 Upgrade: Package Details Window

Control	Description
Grid View	Displays the available components in the upgrade package. This grid also displays the currently installed version along with the new version found in the upgrade package. If the current version and new version do not match, the row will be bold to indicate what will be upgraded.
Upgrade Different Packages Only	This selection instructs the upgrade system to only upgrade components that are newer or older than the currently installed version. This is the default and recommended upgrade method.
Force Upgrade All	This selection instructs the upgrade system to upgrade all components found in the upgrade package. Components with the same version will also be upgraded.
Force Defaults Install	This selection instructs the upgrade system to clear all configurations and upgrade all components on the system. This is equivalent to th

Upgrade: Installation Window

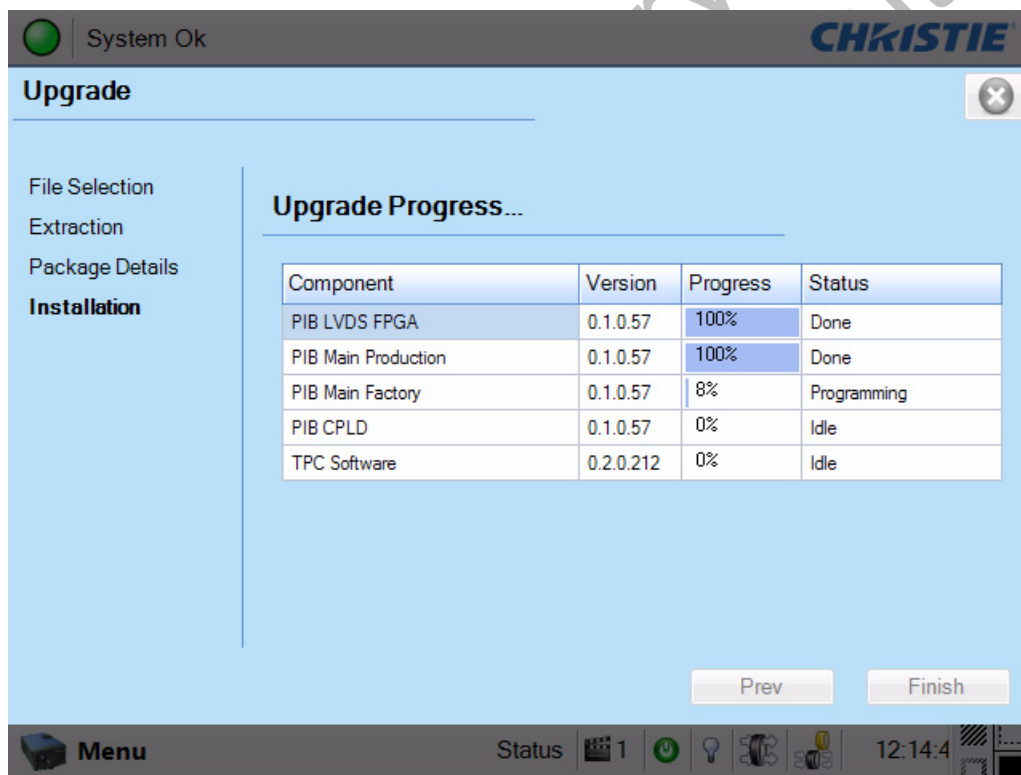


Figure 3-50 Upgrade: Installation Window

Table 3.37 Upgrade: Installation Window

Control	Description
Grid View	Displays the available components that are being upgraded, their versions, the current progress and current status. Current state can be one of the following: idle, transferring, programming, aborted, failed, and done.
Finish	Once the installation is complete (regardless if the installation was success or not) the Finish button becomes enabled.

3.5.8 Help Window

The **Help** window provides on-line information for every window in the TPC. Navigating the help system is done using the table of contents in the left column of the window. The table of contents is structured identically to the menus available from the **Main** panel. Double-click a help page (Main Window) to display the page information. Sections are identified by book icons. Double-click a book (Advanced Setup) to expand the book and display the help pages organized in that section. (Figure 3-51)

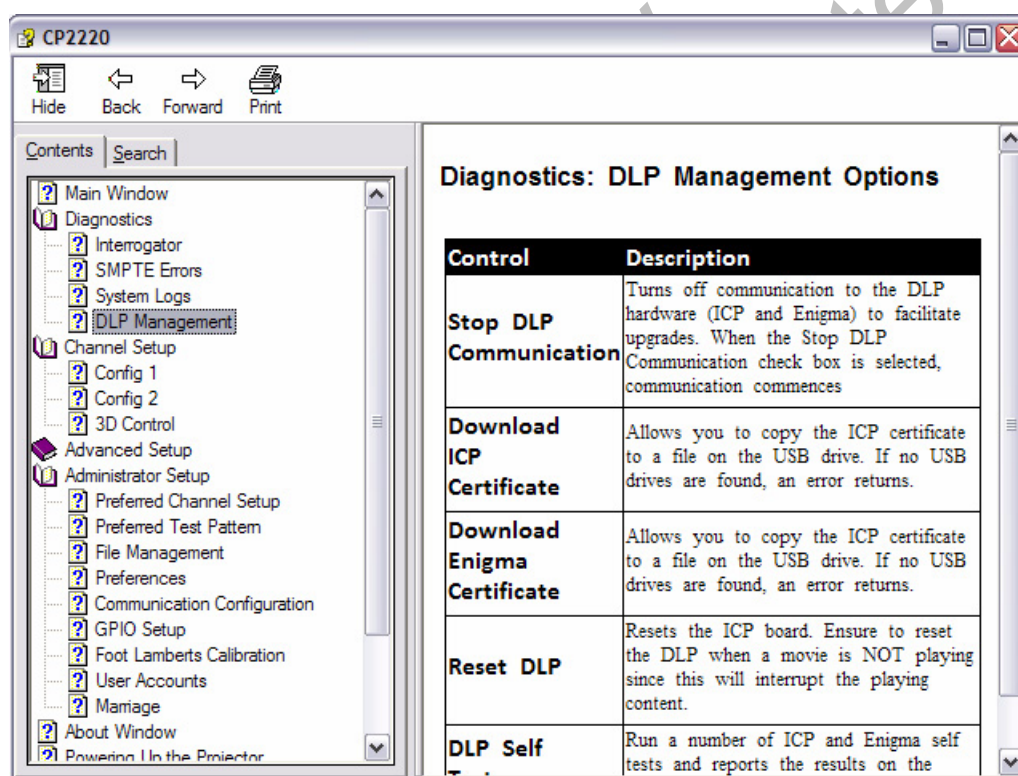


Figure 3-51 Help Window